



TO PRIME OR NOT TO PRIME...

There should be no question

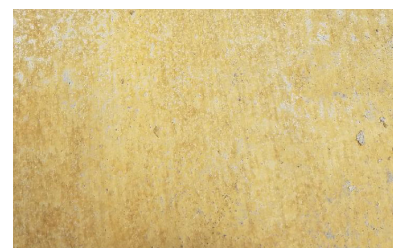
Surface preparation is the key to a successful roof coating application. Take the time to prepare and prime your substrate to achieve enhanced bond strength, protection against discoloration due to bleed through, and long-term system performance.

Why you should prime:

- Enhanced adhesion
- Bleed blocking
- Long-term performance



WITH PRIMER



WITHOUT PRIMER

KM 1P **One-Part Acrylic Primer** **Bleed Blocker for Silicone Coatings**



12 hours	Cure Time	3 hours
	FM Approved	✓
✓	Water Based	✓
✓	Low VOC	✓
✓	Non-Flammable	✓
✓	Galvanized Steel, Aluminum	✓
✓	Concrete	✓
✓	Granulated Modbit	✓
	Smooth Modbit	✓
✓	Wood	✓
Mint Green	Tinted	Grey

KM Epoxy Primer **Two Part Water-Based Primer**





SILICONE ROOF COATINGS



KM PS#220 **Solvent-based, 100% Silicone, 69%** **Solids Elastomeric Roof Coating (FR)**

- Not adversely affected by ponding water
- Excellent sprayability
- Moisture cure
- Resistant to ultraviolet energy
- Fire resistant



PS#250 **High Solids, 100% Silicone, 96 Solids** **Elastomeric Roof Coating (FR)**

- Solvent-free
- Not adversely affected by ponding water
- Fire resistant
- Superior weathering and water resistance
- Fungal and algal resistant
- Fast cure

In accordance with ASTM D 903, it is recommended to test your roof's surface for primer requirements with a field adhesion test, to determine if positive adhesion will be achieved. One (1) test every 10,000 sq. ft., test a primer and an elastomeric roof coating side by side on the roof surface to be coated. If adhesion test fails, additional cleaning and/or priming may be required.



KM Coatings' innovative technology and advanced manufacturing techniques offer sustainable, long-lasting cool roof solutions.

Contact your KM Sales Representative
kmcoatings.us

